



AMHARA DEVELOPMENT ASSOCIATION

INFORMATION SHEET

Project: Full Cycle Primary School

Grand Cost Summary

Sn	Facility	Unit	QTY	Unit Cost	Total Cost
1	4-Class rooms Building	LS	3	432,000.00	1,296,000.00
5	4-Hole Dry Pit Latrine	LS	3	45,000.00	135,000.00
6	Furniture	Pcs.	160	750	120,000.00
7	Hand dug well	LS	1	50,000.00	50,000.00
Grand summary					1,601,000.00

AMHARA DEVELOPMENT ASSOCIATION

Project: Full Cycle Primary School

Cost Summary

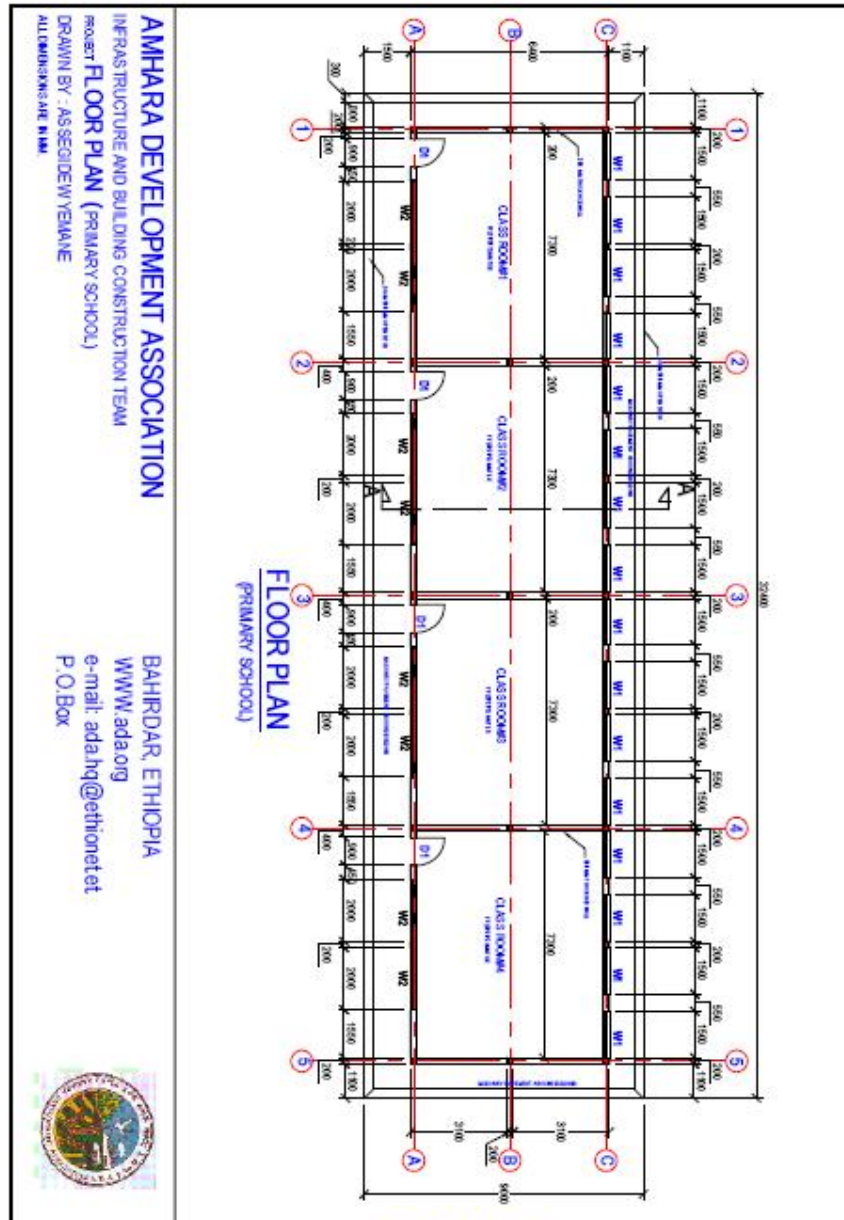
Facility: 4- Class room Building

Item No	Description	Total birr
	A. Sub Structure	
1	Excavation & Earth Work	18,396.22
2	Masonry Work	12,663.54
3	Concrete Work	93,693.36
	Sub Total (A)	124,753.12
	B. Super Structure	
1	Concrete Work	60,279.23
2	Hollow Concrete block Work	39,007.33
3	Roofing & cladding	59,280.63
4	Carpentry and Joinery	17,728.72
5	Metal Work	36,797.04
6	Plastering & Pointing	32,741.60
7	Paving & flooring	37,974.51
8	Glazing	12,524.40
9	Painting	9,599.24
10	Electrical installation	1,314.18
	Sub Total (B)	307,246.88
	Grand Total Block1 (A+B)	432,000.00

AMHARA DEVELOPMENT ASSOCIATION

Project: Full Cycle Primary School

Facility: 4- Class room Building



AMHARA DEVELOPMENT ASSOCIATION

Project: Full Cycle Primary School

Cost Summary

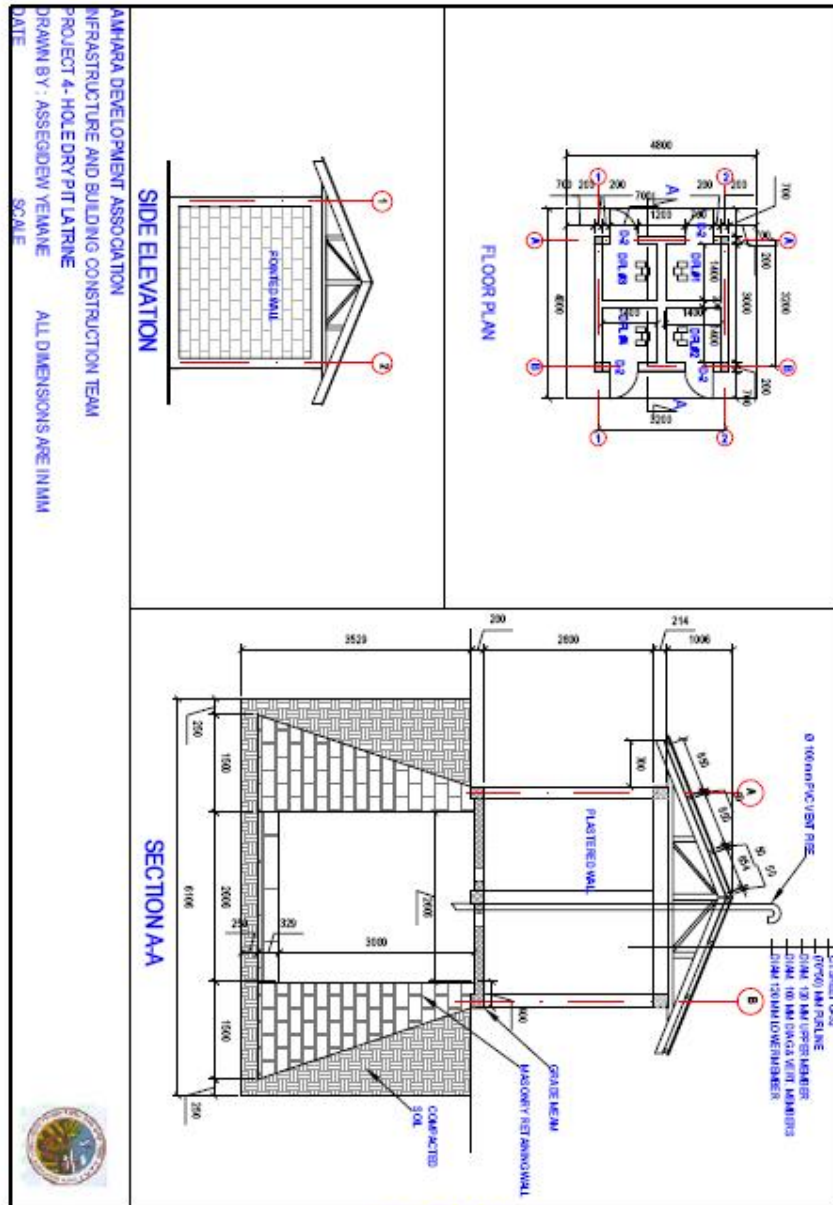
Facility: 4- hole Dry Pit Latrine

Item n.	Description	Total Birr
	A. sub structure	
1	Excavation & Earth Work	3,833.61
2	Masonry Work	4,841.11
3	Concrete Work	5,825.12
	Sub Total (A)	14,499.84
	B. Super Structure	
1	Concrete Work	6,376.87
2	Hollow Concrete block Work	6,660.51
3	Roofing & cladding	4,097.24
4	Plastering & Pointing	7,596.90
5	Paving & flooring	2,532.24
6	Metal Work	3,236.40
	Sub Total (B)	30,500.16
	Grand Total dry pit latrine (A+B)	45000.00

AMHARA DEVELOPMENT ASSOCIATION

Project: Full Cycle Primary School

4-Hole Dry Pit Latrine



PDF created with pdfFactory Pro trial version www.pdffactory.com

AMHARA DEVELOPMENT ASSOCIATION

Project: Full Cycle Primary School

Facility: **Site Plan**

